

JV300



Mimaki JV300 Series Printer

Eco-solvent or dye-sublimation ink roll-to-roll printers available in 54" and 64" media widths



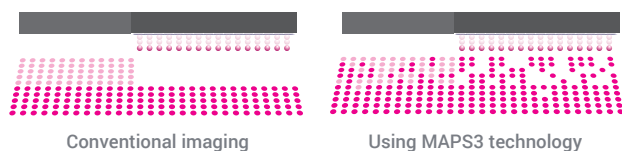
JV300 features-at-a-glance

- Print resolutions up to 1440 dpi
- Print speeds up to 1140 sqft/hr
- Bulk ink system for unattended printing and lower ink costs
- Eco-solvent inks for indoor or outdoor prints
- Dye-sub inks for textile and apparel applications
- Available in 54 and 64 inch widths

HIGH QUALITY AT HIGHER SPEEDS

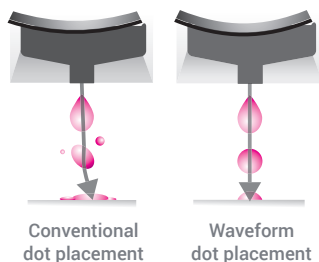
MAPS3 technology reduces the appearance of banding.

MAPS3 (Mimaki Advanced Pass System 3) prints passes in a gradation-like method by dispersing ink drops between passes. This unique imaging technology reduces banding, uneven ink drying and bi-directional stripes.



Superior inkjet technology provides precise, consistent high quality imaging.

Mimaki's Waveform inkjet technology controls the shape of the ink drop to an almost perfect sphere for precise placement. This results in sharper lines, text and image edges.

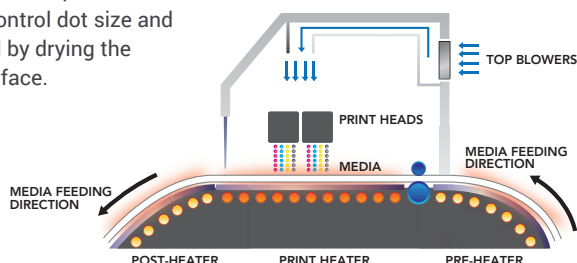


Smooth, high definition color with variable dot printing.

Variable dot printing produces a smoother, more natural gradation without the granular appearance seen in fixed-dot printing.

3-Way Intelligent Heater enhances ink performance.

Three built-in heater areas – pre, print, and post – provide accurate media heating for controlled and consistent ink adhesion and drying. A series of top blower fans control dot size and spread by drying the ink surface.



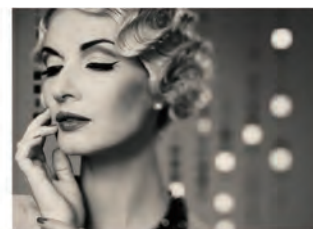
INK VERSATILITY

Eco-solvent ink set includes expanded color choices.

The SS21 eco-solvent ink set now includes not only Light Magenta, Light Cyan and White, but Light Black for deeper dimensional monochromatic and grayscale imaging. The addition of Orange ink widens the color gamut for better accuracy in the color reproduction of food and solid PANTONE® colors.



Conventional grayscale



Grayscale plus Light Black

Also available are Mimaki ES3 eco-solvent inks that offer exceptional scratch resistance for high traffic applications where over-lamination is not desired. These low-odor inks can be used in an office environment without requiring special ventilation.

Configure for eco-solvent or dye-sublimation printing.

JV300 Series printers can be configured for either eco-solvent printing for most sign and graphics applications **or** for dye-sublimation printing for textile and apparel transfer sublimation applications.



SS21 Eco-solvent ink set: 9 colors



ES3 Eco-solvent ink set: 7 colors



BS3 Solvent* ink set: 4 colors



Sb53 Sublimation ink set: 6 colors



Sb54 Sublimation ink set: 6 colors

AUTOMATED QUALITY ASSURANCE

Dependable white ink performance.

When printing with white ink, the innovative Mimaki Circulation Technology (MCT) keeps the ink in constant, fluid circulation between the cartridge and print head. This ensures stable, consistent white ink imaging and reduces white ink and media waste.

Real-time reliability.

JV300 Series printers are equipped with Mimaki's Nozzle Check Unit (NCU) that automatically detects and cleans clogged nozzles while the machine is printing. The Nozzle Recovery System (NRS) takes over if for any reason the nozzle fails to clear and the printer experiences nozzle drop out. Rather than stopping, the printing operation can continue by registering with NRS that a particular nozzle has experienced a drop out.

*BS3 Solvent ink is not available in the U.S. and Canada.



DYE-SUB JERSEYS



BACKLIT POSTERS



VINYL BANNERS

Exceeding expectations.

Paper? Plastics? Fabrics? Whatever the request you'll grow your business with the new Mimaki JV300 Series printers. Built on the proven Mimaki JV Series platform, these roll-based printers include new innovative technologies that facilitate increased throughput, reduced waste and lower cost of operation. Meaning, you can produce everything in your current book of business at higher quality, with shorter turn around and at lower cost per print. Also, with eight ink channels, an expanded color palette, and the ability to print to hundreds of substrates, you gain the application versatility to confidently take on new business.

POSTERS



FABRIC EXHIBIT DISPLAYS



Versatility and productivity.

Mimaki JV300 Series printers go beyond extraordinary to deliver an awe-inspiring range of applications and versatility. Gamut extending eco-solvent inks and variable drop technology enable you to accomplish anything from fine art reproduction, wall décor, and stunning backlits, to vehicle wraps and outdoor displays. Or choose dye-sublimation inks to create vibrant wearable textiles, unique home fabrics, or soft signage. Using the Mimaki JV300 Series printers' superb quality, color fidelity, throughput and flexibility you'll go beyond the expected to capture more wallet share and deliver whatever your customers can imagine.



CONSOLIDATED CONTROLS

JV300 Series printers are equipped with a newly designed, larger LED control panel that puts all the printer's main functions and calibrations at your fingertips.



EQUIPPED WITH MBIS3

JV300 Series printers are equipped with the space-saving MBIS3 (Mimaki Bulk Ink System 3) featuring economical, high-capacity 2L ink packs that enable longer, unattended production and reduced cost per print.



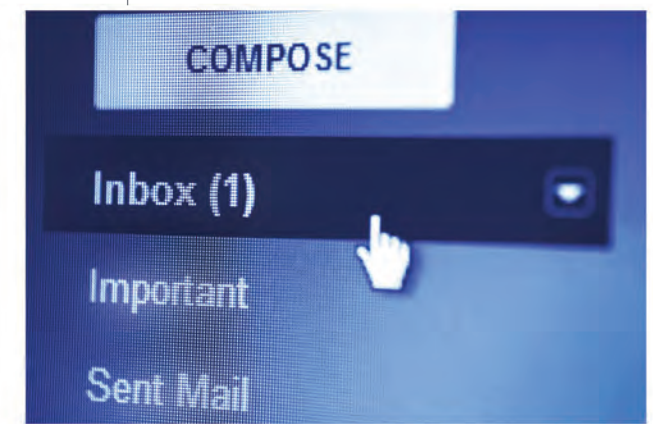
SMOOTH FEEDING PINCH ROLLER SYSTEM

Closer-positioned and independently adjustable pinch rollers ensure smooth, consistent media feeding for high-speed, accurate imaging. From heavy canvas to lightweight paper, your media progresses smoothly without cockling or damage.



MAPS3 BRINGS IMAGES TO LIFE

By thinning the dot pattern and subsequent passes, the unique imaging technology of the MAPS3 (Mimaki Advanced Pass System 3) practically eliminates banding often seen in conventional printing.



E-MAIL PRINT STATUS NOTIFICATION

For long running print jobs, the machine can send status messages such as start, errors, and completion, through the e-mail notification system to your designated staff so they're always in-the-know.

RasterLink6

Intuitive and user-friendly operation



SOPHISTICATED RIP SOFTWARE MAXIMIZES PERFORMANCE

Simultaneous layer printing.

RasterLink6 software enables simultaneous three-layer printing for two-sided viewing – color > white > color, or for white over/underprinting.

Simplified RIP operations.

The “Register as Favorite” feature saves regularly used RIP layouts and operations in a single window for quick retrieval.

Web software update function.

Program updates and profiles can be downloaded via the Mimaki website.

JV300 SERIES SPECIFICATIONS | INKS

Item		Specifications	
Print Head		On-demand piezo head (2 staggered print heads)	
Print Speed (360x360, 1pass, Bi Hi)		4-color x2: 1140 sqft/hr; 8-color (CMYK, Lm, Lc, Lk, Or): 544 sqft/hr	
Print Resolution		360, 540, 720, 1080, 1440 dpi	
Ink	Type	Eco-solvent: SS21 (C, M, Y, K, W, Lc, Lm, Lk, Or, Si)	
		Eco-solvent: ES3 (C, M, Y, K, W, Lc, Lm)	
		Solvent: *BS3 (C, M, Y, K)	
		Water-based Sublimation: Sb53 (Bl, M, Y, DK, W, Lbl, Lm)	
	Ink Supply System	Sublimation: Sb54 (Bl, M, Y, K, W, Lbl, Lm)	
		SS21: 2 L bulk pack (std); 440 ml cartridge (opt); W, Si - 220 ml cartridge	
		ES3: 440 ml cartridge	
		*BS3: 2 L bulk pack (std); 600 ml eco-cartridge (opt)	
Sb53: 2 L bulk pack (std); 440 ml cartridge (opt)			
Sb54: 2 L bulk pack (std); 440 ml cartridge (opt)			
Ink Circulation System		Mimaki Circulation Technology (MCT) for White ink only	
Maximum Print Width		JV300-130: 53.5 in (1,361 mm)	JV300-160: 63.3 in (1,610 mm)
Media	Maximum Width	JV300-130: 53.9 in (1,371 mm)	JV300-160: 63.7 in (1,620 mm)
	Maximum Thickness	1.0 mm or less	
	Roll Weight	88 lb (40 kg) or less	
Certifications		VCCI class A, FCC class A, ETL UL 60950 CE Marking (EMC, Low voltage, and Machinery directive) CB, RoHS REACH and EnergyStar (CCC in process of being acquired), RCM	
Interface		USB2.0	
Input Power Supply		Single-phase (AC 100-120V / AC 220-240V) x2	
Power Consumption		1440W x 2 or less (100V) 1920W x 2 or less (200V)	
Operational Environment		Temperature: 59°F - 86°F	
		Humidity: 35% - 65% Rh (non-condensing)	
Dimensions (WxDxH) Includes MBIS3		JV300-130: 101" x 28" x 71"	
		JV300-160: 110" x 28" x 71"	
Weight		JV300-130: 376 lb	JV300-160: 402 lb

Some of the samples in this brochure are artificial renderings. Specifications, design and dimensions stated may be subject to change without notice (for technical improvements, etc.).

The corporate names and merchandise names written in this brochure are the trademarks or registered trademarks of their respective companies.

Inkjet printers print using extremely fine dots, so colors may vary slightly after replacement of the printing heads. Also note that if using multiple printer units, colors could vary slightly from one unit to another due to slight individual differences.

Item	Color	2L Bulk Pack with MBIS3	440ml Cartridge
SS21 Eco-solvent	Cyan	SPC-0588C	SPC-0501C
	Magenta	SPC-0588M	SPC-0501M
	Yellow	SPC-0588Y	SPC-0501Y
	Black	SPC-0588K	SPC-0501K
	Light Cyan	SPC-0588LC	SPC-0501LC
	Light Magenta	SPC-0588LM	SPC-0501LM
	Light Black	SPC-0588LK	SPC-0501LK
	Orange	SPC-0588Or	SPC-0501Or
	White	SPC-0504W-2 — 220ml Cartridge Only	
	Silver	SPC-0504Si — 220ml Cartridge Only	
ES3 Eco-solvent	Cyan	—	SPC-0440C
	Magenta	—	SPC-0440M
	Yellow	—	SPC-0440Y
	Black	—	SPC-0440K
	Light Cyan	—	SPC-0440LC
	Light Magenta	—	SPC-0440LM
BS3* Solvent	White	—	SPC-0433W-2
	Cyan	SPC-0693C	SPC-0667C (600 ml)**
	Magenta	SPC-0693M	SPC-0667M (600 ml)**
	Yellow	SPC-0693Y	SPC-0667Y (600 ml)**
	Black	SPC-0693K	SPC-0667K (600 ml)**
Sb53 Water-based Sublimation	Eco-cartridge	OPT-J0237	**Required for 600 ml inks
	Blue	Sb53-BL-2L	Sb53-BL-44
	Magenta	Sb53-M-2L	Sb53-M-44
	Yellow	Sb53-Y-2L	Sb53-Y-44
	Deep Black	Sb53-K-2L	Sb53-K-44
	Light Blue	Sb53-LBL-2L	Sb53-LBL-44
Sb54 Sublimation	Light Magenta	Sb53-LM-2L	Sb53-LM-44
	Blue	Sb54-BLT-2L	Sb54-BLT-44
	Magenta	Sb54-MT-2L	Sb54-MT-44
	Yellow	Sb54-YT-2L	Sb54-YT-44
	Black	Sb54-KT-2L	Sb54-KT-44
	Light Blue	Sb54-LBT-2L	Sb54-LBT-44
	Light Magenta	Sb54-LMT-2L	Sb54-LMT-44

*BS3 Solvent ink is not available in the U.S. and Canada.



mimakiusa.com

Mimaki USA, Inc. | 150-A Satellite Blvd. Suwanee, GA 30024 | 888-530-4021 | info@mimakiusa.com

© 2015 Mimaki USA, Inc. All rights reserved. Ver. 1.2



DYE-SUB JERSEYS



BACKLIT POSTERS



VINYL BANNERS

Exceeding expectations.

Paper? Plastics? Fabrics? Whatever the request you'll grow your business with the new Mimaki JV300 Series printers. Built on the proven Mimaki JV Series platform, these roll-based printers include new innovative technologies that facilitate increased throughput, reduced waste and lower cost of operation. Meaning, you can produce everything in your current book of business at higher quality, with shorter turn around and at lower cost per print. Also, with eight ink channels, an expanded color palette, and the ability to print to hundreds of substrates, you gain the application versatility to confidently take on new business.



POSTERS



FABRIC EXHIBIT DISPLAYS

Versatility and productivity.

Mimaki JV300 Series printers go beyond extraordinary to deliver an awe-inspiring range of applications and versatility. Gamut extending eco-solvent inks and variable drop technology enable you to accomplish anything from fine art reproduction, wall décor, and stunning backlits, to vehicle wraps and outdoor displays. Or choose dye-sublimation inks to create vibrant wearable textiles, unique home fabrics, or soft signage. Using the Mimaki JV300 Series printers' superb quality, color fidelity, throughput and flexibility you'll go beyond the expected to capture more wallet share and deliver whatever your customers can imagine.



CONSOLIDATED CONTROLS

JV300 Series printers are equipped with a newly designed, larger LED control panel that puts all the printer's main functions and calibrations at your fingertips.



EQUIPPED WITH MBIS3

JV300 Series printers are equipped with the space-saving MBIS3 (Mimaki Bulk Ink System 3) featuring economical, high-capacity 2L ink packs that enable longer, unattended production and reduced cost per print.



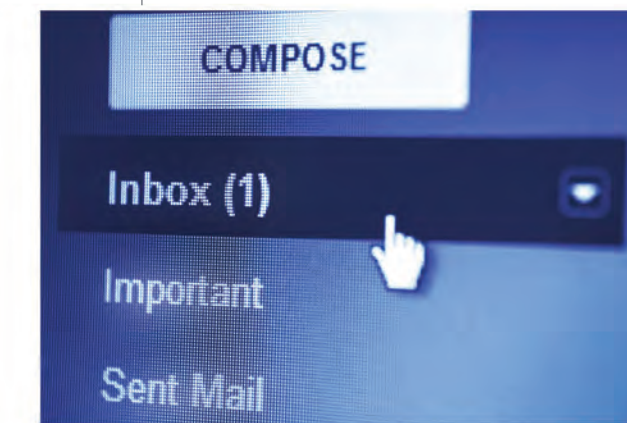
SMOOTH FEEDING PINCH ROLLER SYSTEM

Closer-positioned and independently adjustable pinch rollers ensure smooth, consistent media feeding for high-speed, accurate imaging. From heavy canvas to lightweight paper, your media progresses smoothly without cockling or damage.



MAPS3 BRINGS IMAGES TO LIFE

By thinning the dot pattern and subsequent passes, the unique imaging technology of the MAPS3 (Mimaki Advanced Pass System 3) practically eliminates banding often seen in conventional printing.



E-MAIL PRINT STATUS NOTIFICATION

For long running print jobs, the machine can send status messages such as start, errors, and completion, through the e-mail notification system to your designated staff so they're always in-the-know.