

Semi-Automatic "Random" Carton Sealer

Model:

CT-55R

Excellent for all types of boxes.



* *Shown with Optional Casters*

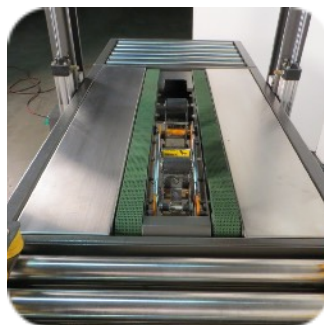
Description

The **CT-55R Operator-Feed, Semi-Automatic Random Carton Sealer** features:

- Automatic Adjustment to Random Box Sizes.
- 2 Bottom Drive Belts with 2 Top Drive Belts.
- Our New "Piranha Tape Head" features an Easy Thread Design with Optimizer Arm.
- Machine Comes Complete with Adjustable Height Legs, Power Cord and 110 Volt Plug.
- Automatically centers the box, adjusts for the width and height and applies a single tape strip to the top and bottom of the random box sizes.



Automatic Box Centering Device with Emergency Stop Switch



Heavy Duty 4 Drive Belts System with 2 Top & 2 Bottom Belts For Positive Grip Pressure. Distance between belts is 5.2"



New "Piranha" Tape Head Features An Easy Thread Design with Optimizer Arm.

CT-55R

The operator simply packs the corrugated carton and feeds it into the machine. A photo-eye activates the box centering device, the operator pushes the box against the top tape head switch and it will move upward to seek the box height. 2 top and 2 bottom drive belts turn on and drive the box through the machine. The CT-55R applies a single tape strip to both the top and bottom of the case simultaneously. This 4 belt drive design is a heavy duty versatile machine designed for dependable performance and easy operation. The CT-55R will easily adjust in seconds to process a different size carton. Excellent for all types of boxes.

STANDARD FEATURES:

- Piranha Tape Head with "Easy Thread" Design
- Interchangeable Tape Heads
- Automatic Adjustment to Random Size Boxes
- Box Centering Device
- 2 Bottom Drive Belts
- 2 Top Drive Belts
- Fully Adjustable Legs

OPTIONAL FEATURES:

- 3" (72mm) Tape Heads
- Heavy Duty Locking Casters
- Stainless Steel Frame

CARTON SIZE: LENGTH: 6" min. to Infinite Length
WIDTH: 7" min. to 20" max.
HEIGHT: 2" min. to 22.5" max.

MACHINE SIZE: 75"L x 33"W x 60"H

MACHINE SPEED: 75ft./min. up to 20 cartons per minute. Production rate depends on carton size and operator dexterity

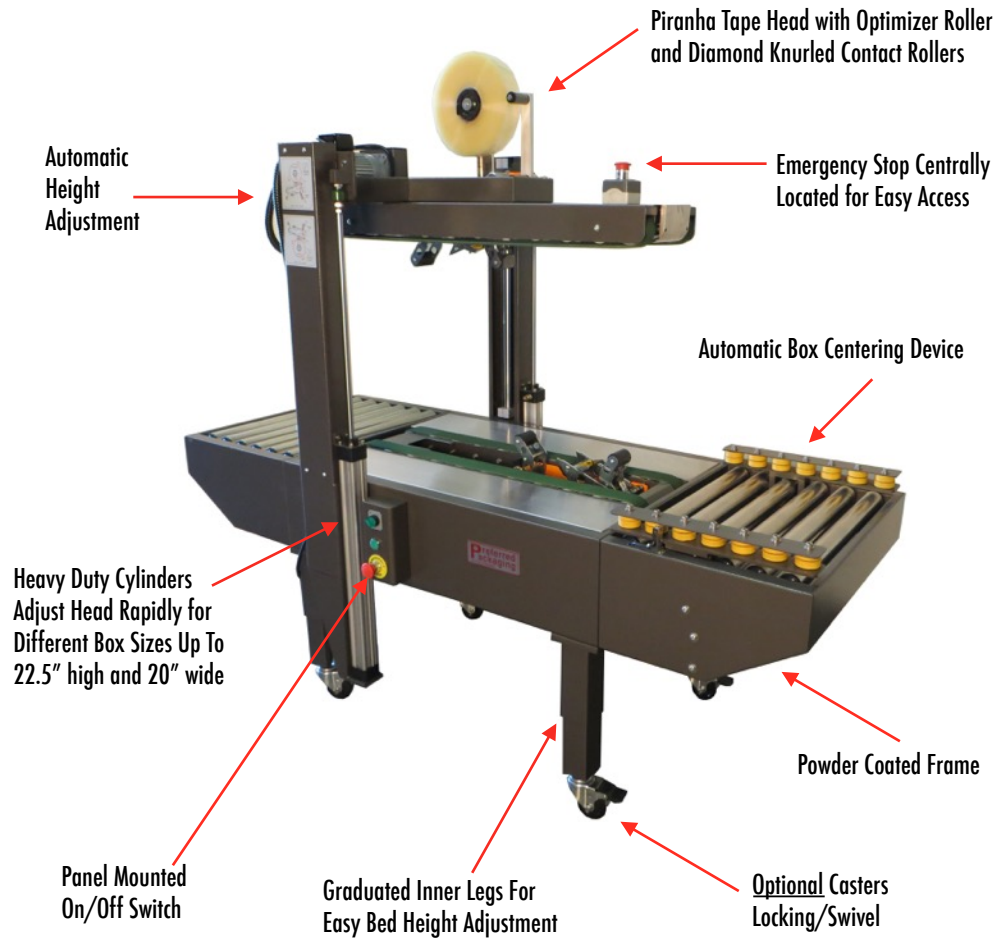
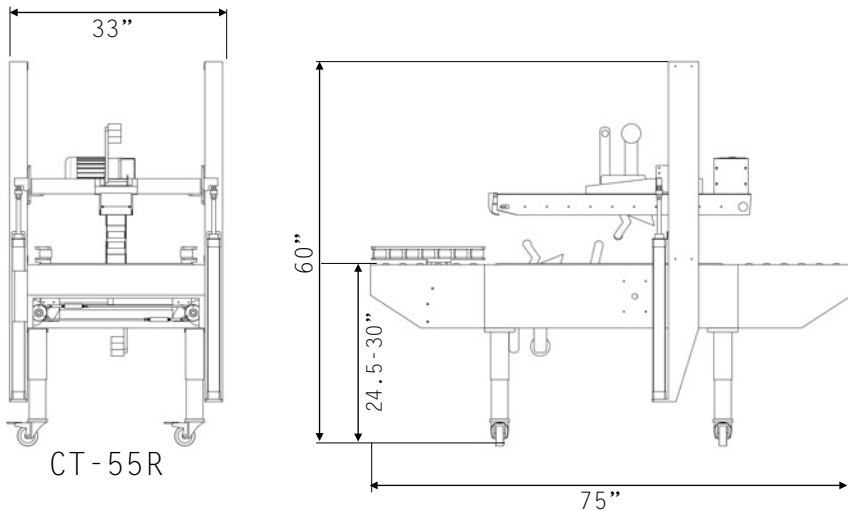
ELECTRICAL: 110 Volt, 1 Phase, 10 Amp

WEIGHT: 264 lbs. Shipping Weight: 375 lbs.

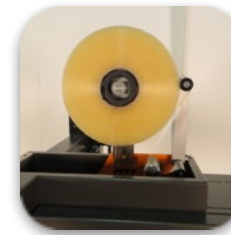
MAX BOX WEIGHT: 75lbs.

TAPE HEAD SPECS: 2" (48mm) Wide - 1,000 yard or 1,500 yard rolls.

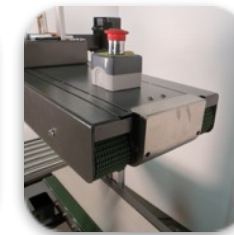
WARRANTY: 1 Year on all parts



Heavy Duty 1/4 HP Drive Motors



Piranha Tape Heads



Emergency Stop Switch



Air Required for Pneumatic Head Activation